



Bexhill College

International 6th Form



Bexhill 6th Form College



Bexhill College



Jackie Taylor
International Director



Katie Wingfield
Marketing Manager



Eleanor Drinkall
Recruitment & Admissions Manager



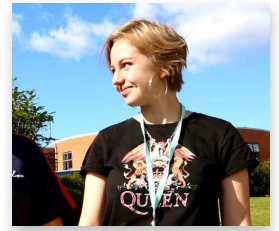
Thomas Routley
Admissions & Accommodation
Assistant

The International Team **welcomes you...**

Our International Team is committed to ensuring each and every student enrolling at College enjoys their time and develops to their full potential.

If you have any questions or wish to make contact with them, you can do so by emailing:

international@bexhillcollege.ac.uk



“I would really recommend this experience to anyone considering coming here. It is great, you definitely won't regret it. You will learn a lot of things and meet a lot of new people.”

Eliska Volencova - Czech Republic



Why choose our International 6th Form?

Bexhill College is a dedicated 6th Form College with a long history of excellent student satisfaction, exceptional exam results and successful student progression to many of the top UK Universities.

We understand that choosing where to study is an important decision so here are some reasons why we think you should come to Bexhill College:

- Safe seaside location
- Wide variety of courses & subjects
- Quality education (Ofsted grade 2)
- Exceptional exam results
- Successful Student Progression
- Professional and passionate teachers
- Excellent Student Satisfaction
- Modern facilities
- Dedicated international team and support for university application
- Friendly, welcoming and inclusive community
- Enrichment/Club/Excursion opportunities
- Reasonable tuition fees



Wide range of courses

providing pathways onto top worldwide universities

Pathway to University

Course	Duration	Start date**	Description	Exams	English language level required	Entry requirements
A Levels	2 Years	September	Well-established UK academic qualifications which are recognised entry requirements for UK Universities. Students are able to take 3 subjects (4 subjects may be available depending on prior attainment).	Yes	IELTS 5.5 or equivalent	Good high school record that is generally equivalent to five GCSEs grade 5 or above*
Intensive 1 Year A Levels (subject to applicant numbers)	1 Year	September	A shorter and more intensive version of the 2 year A Levels for the high achiever. Only available for students wanting to go into Medicine or Law.	Yes	IELTS 6.0	Grade 9-7 equivalents to five GCSEs
Vocational Level 3	2 Years	September	Well-established UK academic qualifications which are recognised entry requirements for UK Universities.	Yes (but not for all subjects)	IELTS 5.0 or equivalent	Good high school record that is generally equivalent to five GCSEs grade 5 or above*
Study Year / High School Year	1 Year	September	This is a study year experience. You will do an AS (half an A Level) or work towards a vocational certificate.	Yes	IELTS 5.5 or equivalent	Good high school record that is generally equivalent to five GCSEs grade 5 or above*
Pre A Level	6 months - 1 Year	January or September	For students who want to improve / develop their English language skills with a view to continue with us to do A Levels or Vocational Level 3.	No	IELTS 4.5 or equivalent	Good high school record



Tailor made packages are available. Please contact us for more details.

Part Year Programmes

Course	Duration	Start date**	Description	Exams	English language level required	Entry requirements
Study Semester	5 months	September/ January	For students who wish to experience life in a UK classroom. The chosen subject area can include a range of A Levels or a vocational area plus English language tuition. Students will study alongside UK students for their chosen subjects.	No	IELTS 4.5 or equivalent	Good School Report
Study Term	3 - 4 months	September/ January	For students who wish to experience life in a UK classroom. The chosen subject area can include a range of A Levels or a vocational area plus English language tuition. Students will study alongside UK students for their chosen subjects.	No	IELTS 4.5 or equivalent	Good School Report
Tasters	2 – 8 weeks	Between September and April	For students who wish to experience life in a UK classroom. The chosen subject area can include a range of A Levels or a vocational area plus English language tuition. Students will study alongside UK students for their chosen subjects.	No	IELTS 4.5 or equivalent	Good School Report

English Courses

Course	Duration	Start date**	Description
English Extra	1 year	Complete Academic Year: September 2021 to May 2022	15 hours per week of general English plus one choice per term of:- <ul style="list-style-type: none"> • British Culture and Society including Business English • Additional English including use of English, Academic English and IELTS • Sports Academies***
English Language	6 weeks	Monday 6th September 2021 to Friday 22nd October 2021 or Monday 1st November 2021 to Friday 17th December 2021	20 hours per week of general English plus one choice of:- <ul style="list-style-type: none"> • British Culture and Society including Business English • Additional English including use of English, Academic English and IELTS • Sports Academies*** In addition to the above there will be excursions/trips and activities included in your timetable
4 Week English	4 weeks	19th July 2021 to 13th August 2021	20 hours per week of general English plus one choice of:- <ul style="list-style-type: none"> • British Culture and Society including Business English • Additional English including use of English, Academic English and IELTS • Sports Academies*** In addition to the above there will be excursions/trips and activities included in your timetable
Weekly English	1-4 Weeks	19th July 2021 to 13th August 2021	20 hours per week of general English plus one choice of:- <ul style="list-style-type: none"> • British Culture and Society including Business English • Additional English including use of English, Academic English and IELTS • Sports Academies*** In addition to the above there will be excursions/trips and activities included in your timetable

*Some A Levels require a higher GCSE grade for entry. Please ask for more information.

**Please contact the College for exact dates

***Trial will be required

PLEASE NOTE THAT IELTS TESTS COSTS ARE EXTRA



For more information about our subject options, please visit our website or contact us at international@bexhillcollege.ac.uk

Subject options

- Accounting
- Acting
- Ancient History
- Animal Management
- Applied Science
- Art and Design
- Biology
- Business
- Catering
- Chemistry
- Childcare
- Classical Civilisation
- Computer Science
- Creative Media
- Criminology
- Dance
- Drama and Theatre Studies
- Economics
- Electronics
- Engineering
- English Language
- English Language and Literature
- English Literature
- Fashion
- Film Studies
- French
- Geography
- Geology
- German
- Graphics
- Hairdressing
- Health and Social Care
- History
- Hospitality
- ICT
- Law
- Mathematics
- Mathematics with Further Maths
- Media Studies
- Music
- Music Performance
- Performing Arts
- Personal Training
- Philosophy
- Photography
- Physical Education
- Physics
- Politics
- Production Arts
- Psychology
- Religious Studies
- Sociology
- Spanish
- Sport
- Sport: Outdoor Adventure
- Textiles
- Travel and Tourism
- Uniformed Services

Some subjects are not available for 1 year. Please contact the College for details.





Outstanding academic success and progression

We have a long history of excellent examination results. For example, our pass rate at A Level is 99.4%.

Many students who study at Bexhill College progress to prestigious UK Universities such as:

- University of Cambridge
- Cardiff University
- Durham University
- University of Edinburgh
- University of Exeter
- Imperial College London
- King's College London
- University of Bath
- University of Surrey
- London School of Economics & Political Science
- University of Manchester
- Newcastle University
- University of Nottingham
- University of Oxford
- University College London
- University of Warwick
- University of York



A Level pass rate in 40 subjects



A Level A*-C grades



Extended Diploma pass rate



A Level A*-B grades

Above are the results from August 2019 



"I love the place, the courses, the friends and the teachers I have here"

Gheorghe Popescu - Romania





Amazing facilities all at one location

Bexhill College boasts excellent academic, sports, media and arts facilities. Unlike many Colleges, all our facilities are on the same site which means there is no travelling to different locations for student activities. An important factor when considering student safety and well being.



Fantastic state-of-the art Gym

Facilities at Bexhill College

- State-of-the-art Gym
- Large Sports Hall
- Science Laboratories
- Mac Music Technology Suite
- Recording Studio
- Hair Salon
- 3G Football Pitch
- 2 Modern Dance Studios / Spin Studios
- Fully Equipped Film Studio
- 3 Tennis Courts
- Library/Student Study Centre
- Creative Media Department
- Swimming Pool
- Modern Gym
- Climbing Wall
- Professional Catering Training Facilities
- Large Grass Training Area
- 200-seat Theatre Complex
- Classrooms Equipped with up to date Technology
- Large Student Canteen/ Recreational Space



All College facilities on site



Excursion to the Harry Potter Experience



"I am part of the Volleyball Academy. There is a big sports hall where we play against other teams. We play together, stay together, it is a really nice opportunity to do after lessons."

Giovanni Zanolla - Italy



"I am in the Swimming Academy. The coach is really really good, I like him a lot. He is kind and always tries to push us forward."

Karolina Menclova - Czech Republic



Enrichment opportunities

There are many enrichment opportunities at Bexhill College. You can do anything from join activities such as team sports, drama and music productions to adding extra short qualifications to your programme in areas such as First Aid or Sports Leadership.

All courses will also add their own special enrichment activities to make the subject more stimulating and rewarding. These vary from revision and study events, to language exchanges and visits to places such as Spain, New York and France.

Enrichment options change each year but below are some examples of what may be on offer. For more information, please visit our website: bexhillcollege.ac.uk

Excursion opportunities

Excursions take place throughout the year which are course based or just for fun. These are a great way of seeing more of the UK and meeting other students. Students have the opportunity to go to cities such as Cambridge, Oxford and Bath.

Specialist sport academies

We run specialist sports academies in Athletics, Badminton, Basketball, Cricket, Football (now in association with **Chelsea FC Foundation and partnered with Eastbourne Borough FC**), Golf, Netball, Rugby, Table Tennis, Tennis, Volleyball and Swimming. We also have a Performing Arts Academy, a Science Academy and an extensive enrichment programme which is open to all students studying at Bexhill College.



"I really like the location of Bexhill. It is close to London and other really cute British towns, which we can visit with friends."

Maria Napieralczyk - Poland



65

Just 65 miles from central London

Bexhill: a coastal location

Bexhill is situated on the south coast of England in the heart of 1066 country. It has easy access to Heathrow airport (2 hours away) and Gatwick airport (1.5 hours).

Bexhill has a stunning coastline with a long promenade and an award winning clean beach. In addition, the town features the 1930's designed De La Warr Pavilion where you can enjoy coastal views over Eastbourne and Hastings, live music and cultural events. With a population of around 45,000, unlike a large city, Bexhill has the advantage of low crime rates and low pollution.

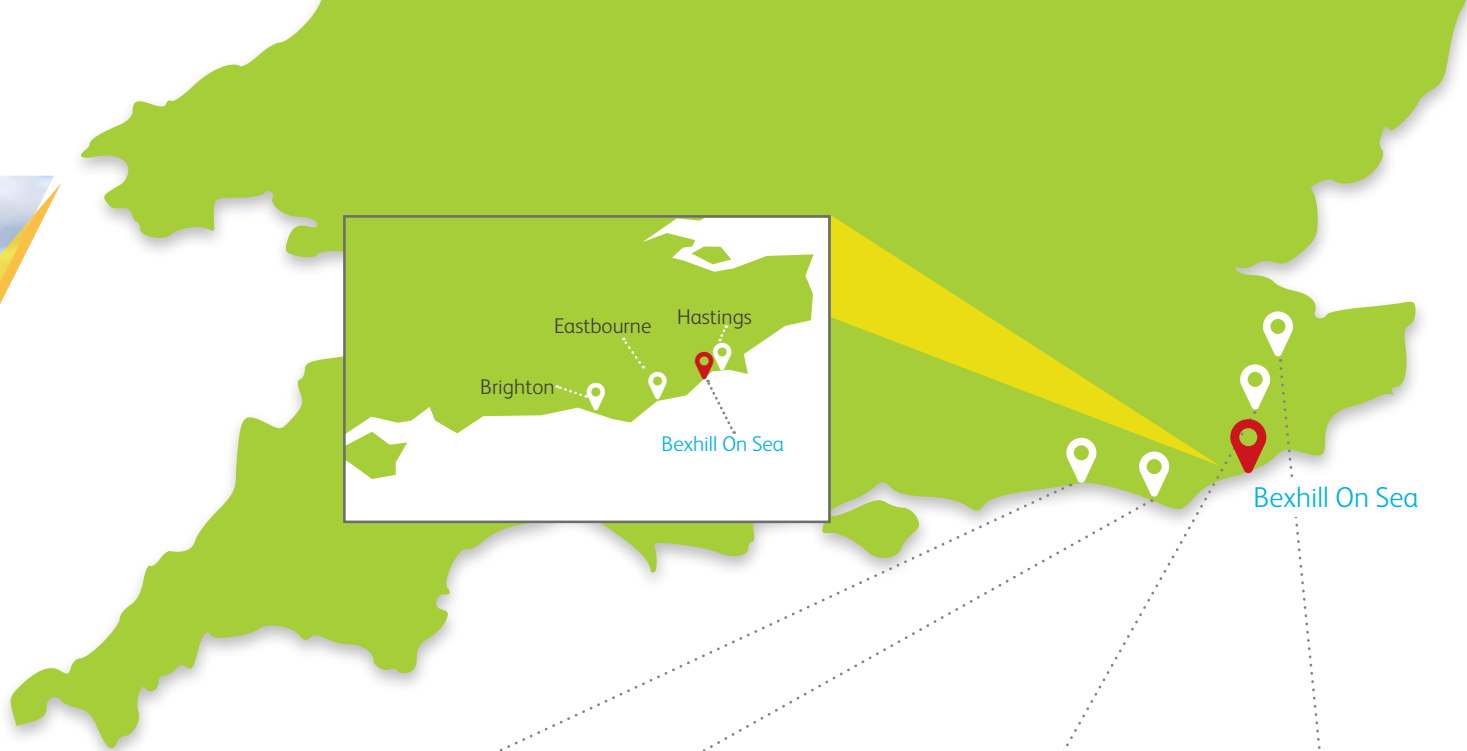
Bexhill 6th Form College campus is located within walking distance of the town centre. Bexhill has good transport links within the town itself and the surrounding areas which makes getting to and from College safe and easy.

Unlike a large city, Bexhill has the advantage of low crime rates and low pollution.

Bexhill to Eastbourne	Bexhill to Brighton	Bexhill to London	Bexhill to Paris
15 minutes	50 minutes	90 minutes	Under 3 ¹ / ₂ hours

Fast and easy rail links to key destinations





Brighton

Brighton is an English seaside resort town. About an hour south of London by train, it's a popular day-trip destination. The town is known for its shingle beaches, waterfront, amusements, nightlife, arts scene, shopping and festivals.

50 Minutes from Bexhill College



Seven Sisters & Beachy Head

Situated between Seaford and Eastbourne, the Seven Sisters Country Park and Beachy Head are made up of chalk cliffs, river valley and grassland. A number of activities including walking, cycling and horse riding can be enjoyed.

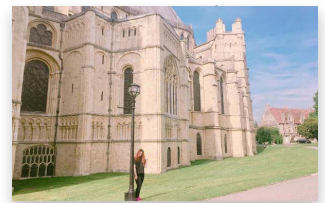
35 Minutes from Bexhill College



Bodiam Castle

Bodiam Castle is a 14th Century moated castle which was built in 1385 by Sir Edward Dalyngrigge and is one of Britain's most picturesque ancient monuments.

30 Minutes from Bexhill College



Canterbury

Canterbury is a historic English cathedral city filled with history. It is a popular tourist destination which offers so much to see and do with a huge variety of attractions and activities to suit all interests.

1 hour and 40 Minutes from Bexhill College

Bexhill and the surrounding areas
Diverse and rich **local heritage and culture**



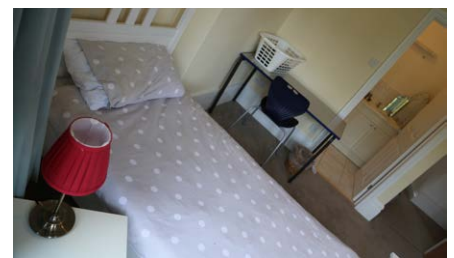
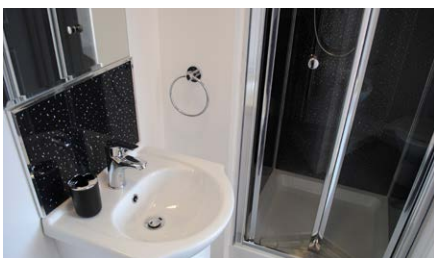


Choice of accommodation

International students who study at Bexhill College have a choice of accommodation; the College's Student Accommodation or UK family 'Homestay'.

The student accommodation is located within a few minutes' walk from the College gates. It has a choice of bedrooms, with shared and en-suite bathroom options, along with the option to include a full board catering package. The accommodation also includes a live-in house parent who provides guardianship for the duration of your stay.

A 'Home Stay' is where you will stay with a British family in their home. Great care is taken to find the best choice for each individual student and our Home Stay accommodations are regularly visited by the Accommodation Officer and are checked to ensure student safety and comfort.





Requested changes to accommodation will result in an extra cost.



Most dietary requirements can be catered for if requested in advance. This will attract an additional cost.

College accommodation

A choice of rooms is available with the option of ensuite or shared bathrooms.

Your accommodation includes:

- A bed, desk, chair, wardrobe and a shelf
- 1 Duvet and pillow and 2 sets of bed linen and towels are provided
- Live-in House Parent who will provide guardianship
- Bedding and towels laundered once a fortnight
- Full Board catering package available*
- Students have access to a shared dining room, lounge and kitchen
- Access to laundry room
- Access to the large garden
- Guardianship

*Catering package includes breakfast and evening meal at the accommodation. A packed lunch will be provided. During College holidays there will be a light lunch provided at the accommodation.

Home Stay accommodation

All homestay providers will welcome you into their homes as part of the family. Some homestay providers may have more than 1 student staying with them and they may be of different nationalities.

You can choose to have your meals provided by the homestay provider on a full board basis or you can choose self-catering.

Your accommodation includes:

- Single or shared bedroom with a desk for study**
- Household bills (excluding telephone)
- Breakfast, packed lunch and evening meals on weekdays and breakfast, lunch and evening meals at the weekends
- A reasonable sized room decorated and furnished to a good standard
- A well heated or ventilated room (according to the time of the year)
- Access to Laundry facilities and linen provided
- Guardianship

**You can choose to have your own room or share with another student - prices will differ.





Tuition fees and expenses

If you choose to study at Bexhill College, you will not only get excellent tuition and a rich and diverse cultural experience, you will also get excellent value for money as our tuition fees are far lower than many private education providers. In addition, our accommodation fees are also very competitive (see page 12 and 13 for more information about our accommodation).

For tuition and accommodation fees, please contact the College by email international@bexhillcollege.ac.uk or check out our website www.bexhillcollege.ac.uk/international.

Airport Transfers

We have easy access to London's international airports. We offer all our new international students airport transfers at a cost from London Gatwick or London Heathrow airport to your accommodation when you first arrive. Luton and Stansted can be accommodated, please contact the College.

"Teachers at Bexhill College are really supportive and they are always willing to assist me if I need help."

Nguyen Hoai Trang - Vietnam



How to apply to Bexhill College

The application is a ten step process, an overview of which is set out below. More details on the application process are available on the application form.

Please be aware that if you change your mind after being accepted for a course, the deposit and tuition fees will only be refunded under exceptional circumstances as defined by the College. More details of this policy are available on request.

10 easy steps...

Step 1



Find out about the courses that are on offer by visiting our website www.bexhillcollege.ac.uk/international

Step 2



You complete the application form, and send it, along with all supporting documents to Bexhill College.

Step 3



We process application, check course availability, assess language ability and arrange a Skype interview.

Step 4



A decision on your application is made and we notify you via email.

Step 5



You accept the offer and pay course fees. We send you details of your accommodation or homestay.

Step 6



If you require a visa, we will issue you with a CAS document so that you can apply for your visa.

Step 7



You choose accommodation or homestay requirements.

Step 8



You arrive in the UK and travel to your accommodation.

Step 9



You attend an induction at Bexhill College.

Step 10



Then you commence your studies at Bexhill College.





Bexhill 6th Form College

Bexhill College International 6th Form

Penland Road, Bexhill on Sea, East Sussex,
United Kingdom TN40 2JG
Telephone. +44 (0)1424 214545
Email. international@bexhillcollege.ac.uk

Principal: Karen Hucker . International Director: Jackie Taylor

 bexhillcollege.ac.uk/international

 facebook.com/bexhillcollegeinternational

 twitter.com/bcintstudents  [@bexhillcollege](https://instagram.com/@bexhillcollege)

